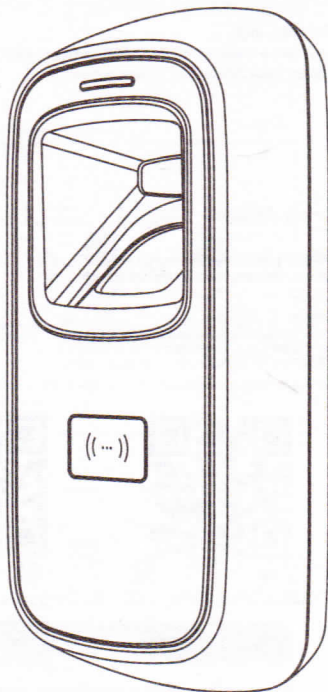


# M5 Plus

Outdoor Fingerprint & Card  
Reader/Controller

Quick Guide v1.0

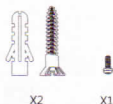


**ANVIZ®**  
Intelligent . Security

## Package List



Device



Screws



RJ45 Connector



Quick Guide



X4

Card

### **Note:**

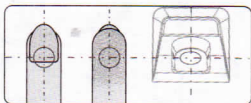
1. Please check if the package contains all the items listed above. Contact the distributor if there is any problem.
2. Please keep the product away from the magnetic field, and avoid causing any damage to the device.
3. Please use the original power supply or refer to the instruction to get the right power supply.
4. Please strictly follow the instructions to install the product. Any damage to it caused by incorrect operation and wiring are not under warranty.

→ There are 4 cards in the package:

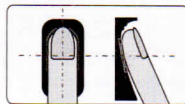
Enroll Card  Delete Card  User Card  \* 2.

## Illustration for placing finger

- **Correct method** (Straighten your finger and then place it on the sensor. Ensure the finger is flat and covers the entire sensor window)



Always place finger in the center of the sensor.

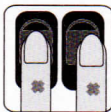


Try to place your finger covers the entire sensor window.

- **Incorrect method**



DO NOT move your finger before the backlight of sensor turns off.



DO NOT place finger away from the center of the sensor window.



DO NOT place finger at an angle.



DO NOT take off finger during the fingerprint verification process.



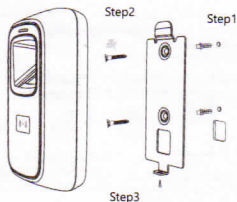
DO NOT just use your fingertip.



DO NOT slide your finger during the fingerprint verification process.

# Installation Diagram

## Back panel install way:



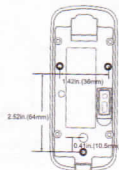
### Steps:

**Step1:** Drill holes in the wall follow the hole position on back panel.

**Step2:** Install and fix back panel, connect related cables.

**Step3:** Place M5 Plus on back panel, fix screw at the bottom of M5 Plus.

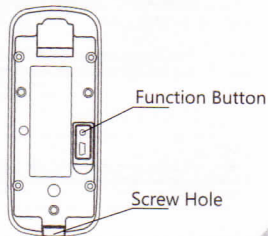
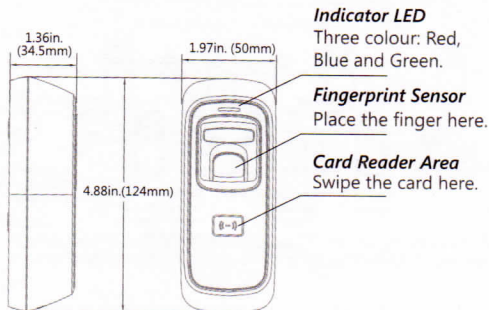
## Without back panel install way:



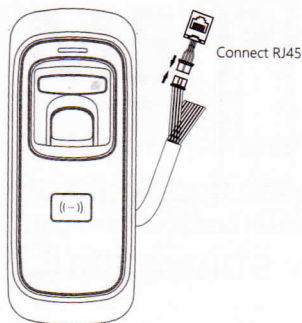
### Steps:

Fix M5 Plus screws directly to the bottom shell behind the wall, the depth of screws is 8mm. This install method is unique, safe and convenient. Package list has no these screws, according to wall thickness select the length of M5 Plus screws.

## Appearance



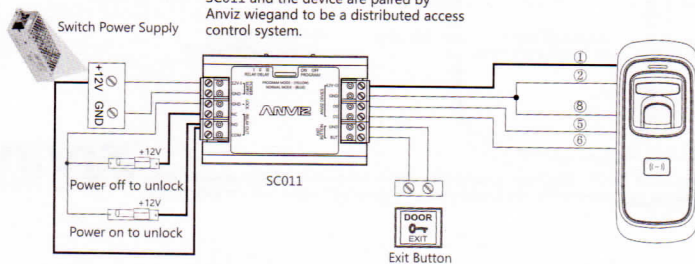
# Wiring Instruction



Function	No.	Cable Color	Description
Power	①	Red (Heavy Line)	DC12V
	②	Black (Heavy Line)	GND
Tamper alarm (Only contact output signal, do not connect with electric equipment)	③	Brown	Tamper alarm
	④	Pink (Heavy Line)	Tamper alarm
Wiegand Output	⑤	Green	Wiegand DATA0 Output
	⑥	White	Wiegand DATA1 Output
	⑦	Red	D/S
	⑧	Black	GND
	⑭	Black	GND
Pulse signal	⑨	Light Brown	RS485A
	⑩	Light Blue	RS485B
Relay Output	⑪	Blue	NO
	⑫	Light green	COM
	⑬	Orange	NC

## Anviz Wiegand Wiring:

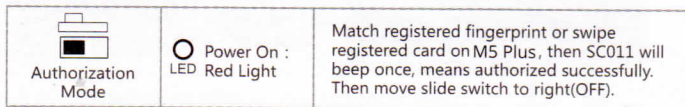
SC011 and the device are paired by Anviz wiegand to be a distributed access control system.



### **SC011 authorization setting:**

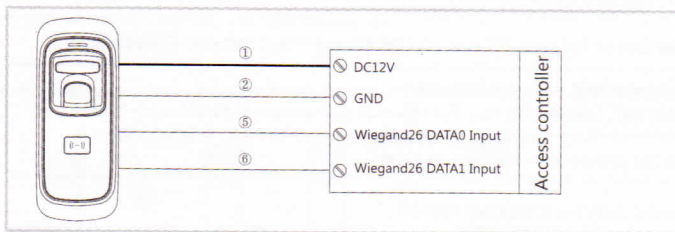
Make sure correct wiring between M5 Plus and SC011, power on them, then move slide switch to 'PROGRAM MODE' as below:

Switch in 'PROGRAM' on the SC011: Move slide switch to left(ON).



### **Wiegand 26 Wiring:**

Between M5 Plus and Anviz SAC844 or other Access Controller as below:



### **Wiegand data output format:**

#### **1. Anviz Wiegand data output format:**

All registered users output devices' last eight serial number (For example, SN of one device is 1050000014470004, then Anviz Wiegand output 14470004.)

#### **2. Wiegand 26 data output format:**

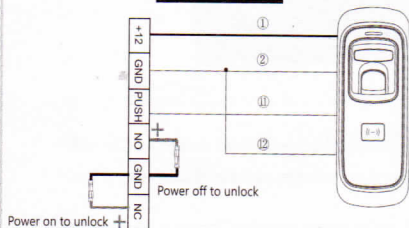
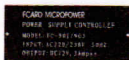
Card user: Output card number.(Decimal)

Fingerprint user: Output ID number

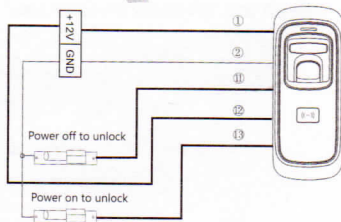
#### **3. Wiegand output format can be set by PC software**

## Wiring Type Access Controller

Switch Power  
Supply



Switch Power  
Supply



### Important notice:

Please carefully follow this wiring instruction. Any damage caused by incorrect wiring is not covered by warranty.

## Bluetooth shakes the door

1) Download the APP:

IOS: Input 'crosschex ekey' in App Store and download.

Android: Input 'crosschex ekey' in Google Play and download.

2) Open the door management according to the instructions in the app.



CrossChex eKey  
ANNVIZ GLOBAL INC.

## Web Management

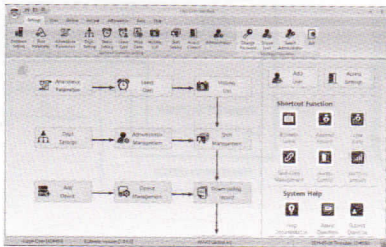
1) Connect your PC or laptop to device with ethernet cable, make sure the IP of PC or laptop in the same segment with M5 Plus.

2) Input default IP in the browser's address bar as <http://192.168.0.218>, then click 'confirm' key and login into Web Server by User name(default administrator account is 'admin') and Password(default is '12345'), click 'Login' to enter web management main interface.

# Working with Management Software

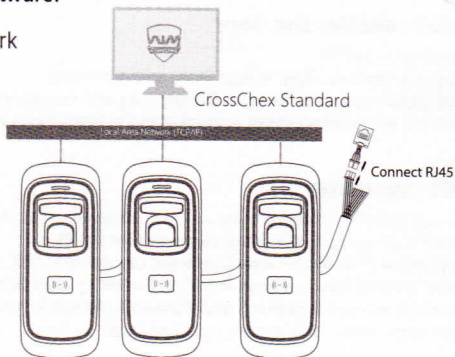
## 1. Install the Management Software on Computer

Scan the QR code on user manual to install the software.

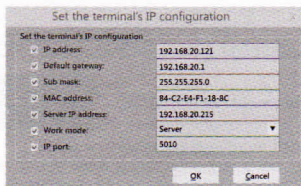



## How to connect M5 Plus with Software?

Method One: Connect to Network







Right click on the device icon  and choose 'Set the IP configuration' to set correct network environment parameters such as above window.

## Method Two: Connect to Cloud

The Device can be managed by Anviz cloud management platform Crosschex cloud.

For more details, please refer to <https://www.anviz.com/product/crosschex/cloud.html>.

## 2. Enable Communication between M5 Plus and the Management Software CrossChex

- \*Turn on management software CrossChex
- \*Go to Device tab. Search and add the M5 Plus to management software CrossChex
- \*Click Synchronize Time button to communicate with M5 Plus. If Synchronize is successful, the device icon will turn to blue.

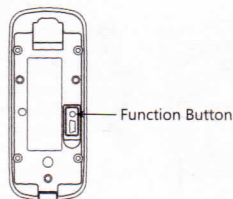
## 3. The Management Software CrossChex Features

- \*Device\Backup User: Download user info from M5 Plus to CrossChex
- \*Device\Download Records: Download records from M5 Plus to CrossChex
- \*User\Modify: Edit name or other user info. Then click "Upload User" to Upload user info to M5 Plus device
- \*Record\Search: search and view the records
- \*Attendance: Calculate, Search results and generate reports
- \*Data\Backup Database: Backup Database
- \*Setting\Shift: Set up Time table and Scheduling
- \*Device\Device Parameter: Set up device, Clear records on M5 Plus or Reset M5 Plus to factory settings

## Function Button

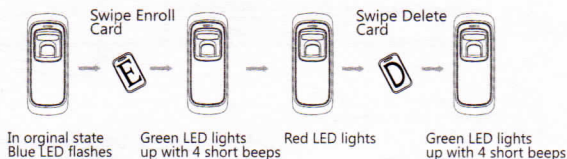
Press function button until you hear beeps which means the information of Enroll Card and Delete Card have been eliminated in the device.

**Notice:** The operation will not delete user data stored in the device.



After that, you **MUST** register management cards (Enroll Card and Delete Card) to run the machine.

### ▪ Register Management Cards (Enroll Card and Delete Card)



### ▪ IMPORTANT:

M5 Plus is suitable for DC12V power supply only. When connect to DC12V power supply, the indicator light displays blue and flashes fast. Meanwhile, the backlights of fingerprint sensor turn on with beeps.

# Operation Guide

## ■ Register User:

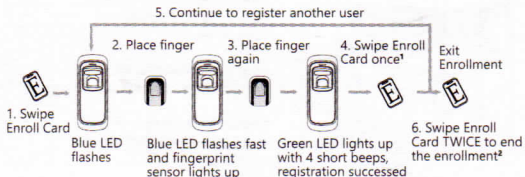
### ● Add One Fingerprint per User Only:

Note: 1. After finish enrolling current user, please swipe enroll card and then continue register another user.

2. After finish enrollment, please swipe enroll card TWICE to exit enroll status.

#### Notice:

When you place finger on M5 Plus , Red LED flashing with two long beeps means the finger has been registered.



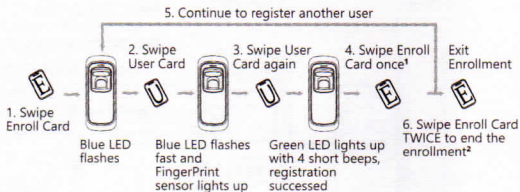
### ● Add Card Only:

Note: 1. After finish enrolling current user, please swipe enroll card and then continue register another user.

2. After finish enrollment, please swipe enroll card TWICE to exit enroll status.

#### Notice:

When you swipe card on M5 Plus , Red LED flashing with two long beeps means the card has been registered.



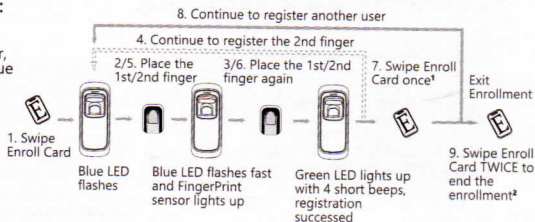
# Operation Guide

## • Add Two Fingerprints of one User:

- \* Two fingerprints belongs to one user ID.

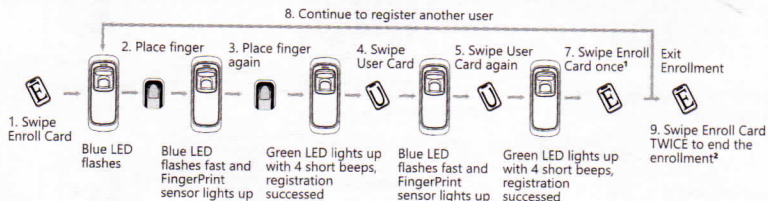
Note: 1. After finish enrolling current user, please swipe enroll card and then continue register another user.

2. After finish enrollment, please swipe enroll card TWICE to exit enroll status.



## • Add Fingerprint and Card of one User:

- \* The wiegand output of fingerprint and card are the same.



Note:

1. After finish enrolling current user, please swipe enroll card and then continue register another user.
2. After finish enrollment, please swipe enroll card TWICE to exit enroll status.

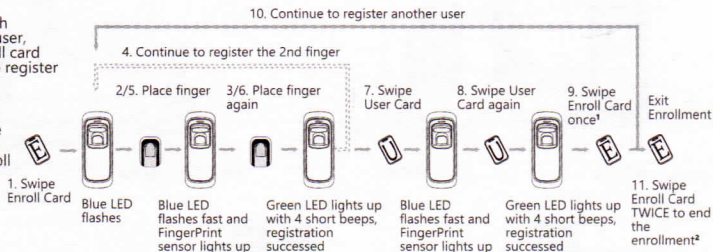
# Operation Guide

## • Add Two Fingerprints and Card of one User:

\* The wiegand output of fingerprint and card are the same.

Note: 1. After finish enrolling current user, please swipe enroll card and then continue register another user.

2. After finish enrollment, please swipe enroll card TWICE to exit enroll status.



## ■ Delete User:

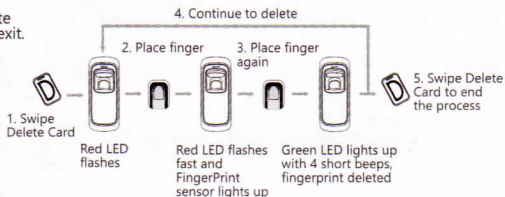
### • Delete Fingerprint or Fingerprint and Card

After delete one user, you can continue to delete another user or swipe Delete Card to save and exit.

When fingerprints or card belong to one user ID, you can delete either one to delete this user.

#### Notice:

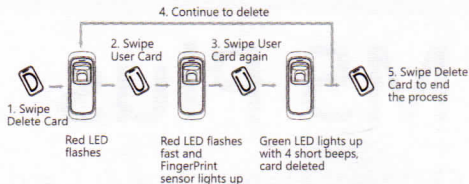
When you place finger on M5 Plus, Red LED flashing with long beeps means the fingerprint does not exist in the device.



# Operation Guide

## • Delete Card:

After delete one user, you can continue delete another user or swipe Delete Card to save and exit.

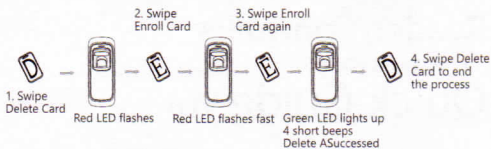


## • Delete All Users

Delete all uses fingerprints and cards, the device parameter setting do not change.

### Notice:

When you swipe card on M5 Plus, Red LED flashing with long beeps means the card does not exist in the device.



<https://bit.ly/2WugbYp>

Dropbox



<https://bit.ly/2Vn0wh6>

Google



<https://bit.ly/2J9qA95>

Anviz

Anviz brand and product are trademarked and protected under law of the United States. Unauthorized use is prohibited.

For more information, please visit [www.anviz.com](http://www.anviz.com), or send email to [sales@anviz.com](mailto:sales@anviz.com) for more help.

©2019 Anviz Global Inc. All Rights Reserved.